



*Air for life*

## Installation regulations

Wireless 3-position switch

English





# Installation regulations

Wireless 3-position switch



Store near the appliance

This appliance may be used by children as of 8 years of age, persons with reduced physical or mental capacities, and persons with limited knowledge and experience if they are supervised or have received instructions on how to use the appliance safely and are aware of the possible dangers.

Children younger than 3 years of age must be kept away from the appliance, unless they are under constant supervision.

Children between the ages of 3 and 8 may switch the appliance on or off, but only if supervised or if they have received clear instructions on the safe use of the appliance and understand the possible dangers, on the condition that the appliance has been placed and installed in the normal position for use. Children between the ages of 3 and 8 may not insert the plug into the socket, nor clean or make changes to the settings of the appliance, nor carry out any maintenance on the appliance that would normally be carried out by the user. Children may not play with the appliance.

**If you need a new power cable, always order the replacement from Brink Climate Systems B.V. To prevent dangerous situations, a damaged mains connection must only be replaced by a qualified expert!**

Country: GB

# Contents

1	User manual. . . . .	5
1.1	Description Wireless 3-position switch. . . . .	6
1.2	Delivery content. . . . .	8
2	Technical specification. . . . .	9
2.1	General product specification. . . . .	9
2.2	Environmental influences. . . . .	9
2.3	Overview operational controls. . . . .	10
3	Assembly. . . . .	12
3.1	Installing Wireless 3-position switch. . . . .	12
3.2	Remove Wireless 3-position switch. . . . .	13
3.3	Connecting permanent power supply (option). . . . .	14
3.4	Using another frame (option). . . . .	16
4	Setting to work. . . . .	17
4.1	Connecting with the wireless transmitter/ receiver (Pairing). . . . .	17
4.2	Factory reset Wireless 3-position switch. . . . .	19
4.3	Pairing multiple systems. . . . .	19
5	Information additional Wireless 3-position switch. . . . .	20
5.1	Pairing additional remote controller/sensor. . . . .	20
6	Signal amplifier. . . . .	22
7	Troubleshooting and warranty. . . . .	23
7.1	Failure. . . . .	23
7.2	Warranty. . . . .	23
8	Maintenance. . . . .	24
8.1	Maintenance. . . . .	24
8.2	Replace battery. . . . .	24
9	Declaration of Conformity. . . . .	25
10	Recycling and disposal. . . . .	26

# 1 User manual

Dear client,

Thank you for purchasing the Wireless 3-position switch. This user and installation manual contains all required information to quickly become familiar with the product. We kindly request you to carefully go through this information before using the product. This user's manual is intended for the Wireless 3-position switch installer and end user.

Store this user's manual. For more information or ordering manuals, please contact:

Brink Climate Systems B.V.  
P.O. Box 11  
NL-7950 AA, Staphorst, The Netherlands  
T: +31 (0) 522 46 99 44  
F: +31 (0) 522 46 94 00  
E: [info@brinkclimatesystems.nl](mailto:info@brinkclimatesystems.nl)  
[www.brinkclimatesystems.nl](http://www.brinkclimatesystems.nl)

## 1.1 Description Wireless 3-position switch

### Intended and unintended use

This manual is about the Wireless 3-position switch (See A in the image below).

The Wireless 3-position switch should only be used in combination with products approved by Brink Climate Systems B.V..

The Wireless 3-position switch can only be used with a heat recovery unit (HRU) equipped with a USB connection and where the various components are equipped with specific software versions:

- HRU device software version starting with S2 → Version S2.01.24 or higher.
- HRU device software version starting with S3 → Version S3.01.03 or higher.
- Wireless transmitter/receiver and remote controller(s)/sensor(s) software version → S1.01.15 or higher.

Software versions on the HRU device can be checked through the user interface or by consulting the relevant installation manual of the device. The HRU device can be updated using the USB stick and instructions provided with the wireless transmitter/receiver.

Brink Climate Systems B.V. offers a series of remote controllers/sensors that connect to a heat recovery unit (HRU) via a wireless transmitter/receiver (F). This series consists of 5 types of wireless remote controllers/sensors (A-E). The remote controller (A, B, or C) indicates when the filter(s) need to be replaced/cleaned or when there is a malfunction in the ventilation system.

Optionally, a signal amplifier is available. This amplifier is necessary when the signal in the dwelling/house needs to travel a long distance, in very well-insulated homes, or in situations where signal-disruptive materials are used. When designing, provide for provision for this signal booster.

The connected HRU device is operated by pressing one of the buttons on the Wireless 3-position switch. For explanation of the buttons of the Wireless 3-position switch see → [Overview operational controls](#) -> page 10. The Wireless 3-position switch must always be used together with a Wireless transmitter/receiver on the HRU appliance; a combination of multiple remote controller(s)/sensor(s) on 1 Wireless transmitter/receiver is possible.

In total, a maximum combination of 12 remote controller(s)/sensor(s) can be paired to 1 transceiver (Max. 4 controllers / max. 4 CO<sub>2</sub>-sensors and max 4 humidity sensors).

---

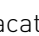
### Note

**A remote controller with a build in CO<sub>2</sub>-sensor is seen by the connected HRU appliance as a CO<sub>2</sub>-sensor and a controller with a build-in humidity sensor is seen as a humidity sensor(RH).**

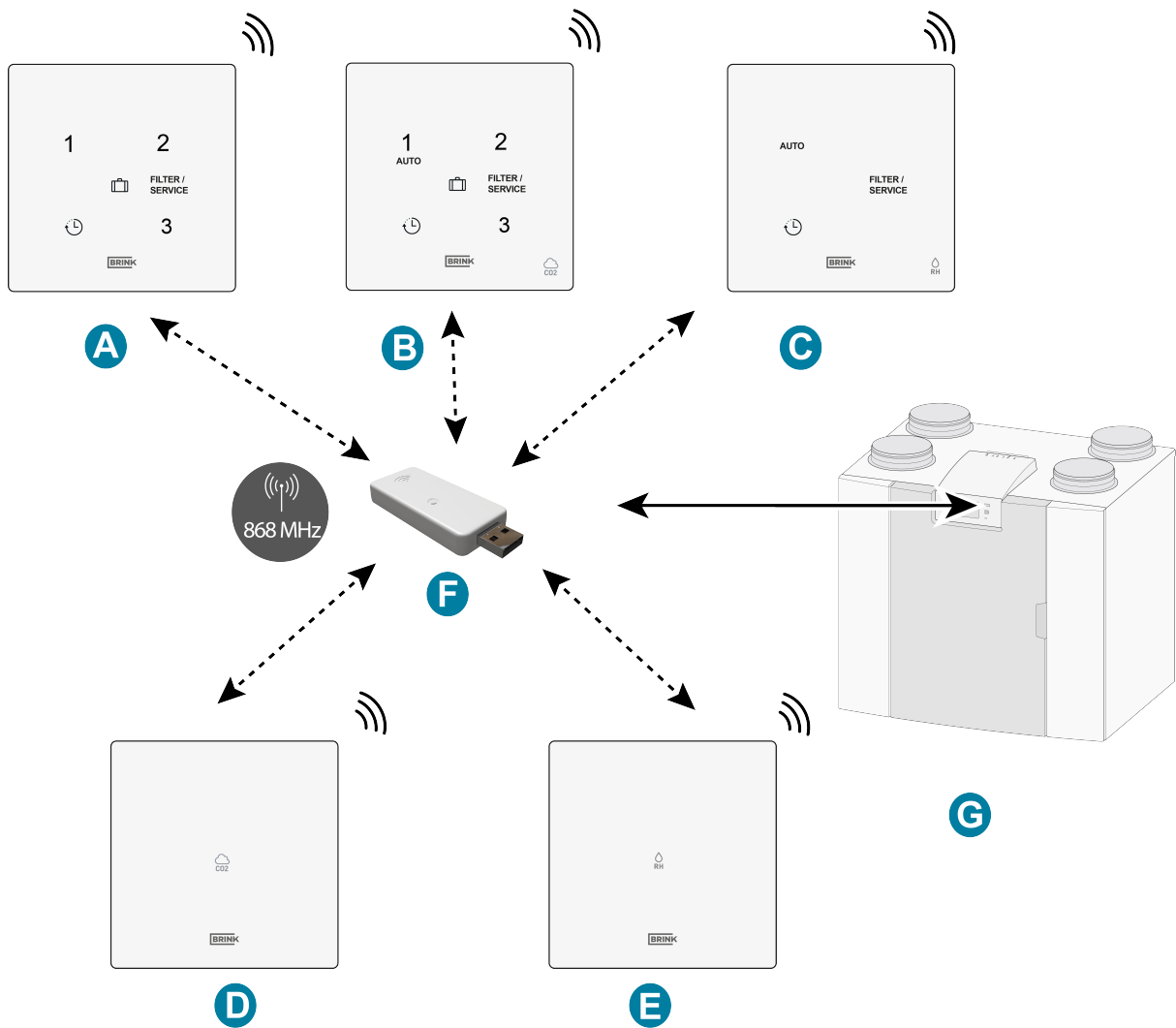
---

If one or more CO<sub>2</sub> sensors are paired with the HRU device, then the device ventilates according to the conditions set in the HRU device by the connected CO<sub>2</sub> sensor(s).

If multiple sensors are used, the sensor requesting the highest ventilation level takes priority; if multiple remote controllers are used, the most recently used ventilation level takes precedence.

When the vacation mode () is activated (if available), the humidity control/CO<sub>2</sub> control (if applicable) is not operational! The CO<sub>2</sub> control is also not operational in setting 3 of a 3-position switch and in boost mode on a RH sensor with boost function.

The airflow rates associated with the ventilation settings must always be set in the paired HRU device. Refer to the installation manual of the connected HRU device for the ventilation settings..



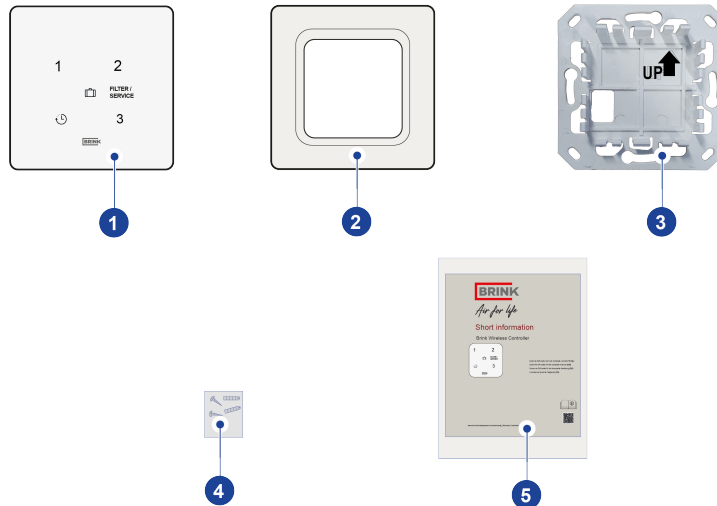
- A. Wireless 3-position switch
- B. Wireless CO<sub>2</sub> sensor with 3-position switch
- C. Wireless RH sensor with boost function
- D. Wireless CO<sub>2</sub> sensor
- E. Wireless RH sensor
- F. Wireless transmitter/receiver
- G. Device with USB connection (e.g., HRU device type Flair)

## 1.2 Delivery content

Check that the delivered Wireless 3-position switch is complete and not damaged.

*The delivery content of the Wireless 3-position switch consists of the following components:*

1. Wireless 3-position switch
2. Frame
3. Wall bracket
4. Mounting screws (2x) and wall plugs (2x)
5. Short information with QR-code to on line manual



The delivery content does not include the optionally available permanent power supply which can be ordered from Brink under part number 532924.



# 2 Technical specification

## 2.1 General product specification

### Product description

Name: Wireless 3-position switch

### Technical product specifications

Operating voltage: 3 V

Protection class: IP21

Type of battery : CR2032.MRF Lithium (preferred manufacturer Renata or Panasonic CR-2032/BS )

#### **Not applicable if a permanent power supply is used!**

Battery performance: **Battery performance will drastically deteriorate when no connection to the Wireless transmitter/receiver in the HRU appliance can be made!**  
For example out-of-range or removed from the USB slot. Please remove the battery when storing the sensor/controller.

Frequency: 868 MHz

Color: RAL 9010 (White)

### Ambient conditions

Ambient temperature: 0 °C to 50 °C

Storage temperature: -20 °C to 60 °C

Humidity: 0% to 90%

Other: For indoor use only

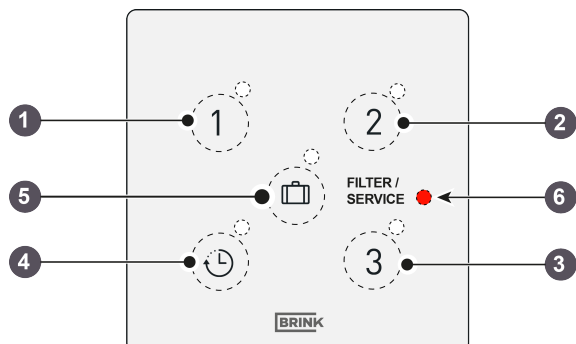
Range: 300 m (open field; 1 meter height)

## 2.2 Environmental influences

For correct functioning, the Wireless 3-position switch should be placed and used in a space with the correct ambient conditions for proper operation. The Wireless 3-position switch may only be mounted indoors, but not close to a heat source, a radiator or in a extreme humid environment. The Wireless 3-position switch may not be exposed to direct radiation heat (sun light). The Wireless 3-position switch may not be installed close to a magnetic field. This could damage internal components.

## 2.3 Overview operational controls

The Wireless 3-position switch has 5 (capacitive) buttons. Each button is equipped with a LED (white).



1. *Button ventilation level 1*
2. *Button ventilation level 2*
3. *Button ventilation level 3*
4. *Button boost function*
5. *Button holiday mode*
6. *Filter/fault indication LED (red)*

### Button 1

When button 1 is operated, the HRU appliance will be set to ventilation level 1 (basic ventilation during absence); the white LED next to button 1 will flash once as "button press" confirmation.



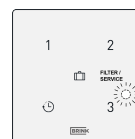
### Button 2

When button 2 (sufficient ventilation during presence) is operated, the HRU appliance will be set to ventilation level 2; the white LED next to button 2 will flash once as "button press" confirmation.



### Button 3

When button 3 (maximum ventilation during cooking/showering) is operated, the HRU appliance will be set to ventilation level 3; the white LED placed next to button 3 will flash once as "button press" confirmation.



### Button 4 / Boost (🕒)

When button 4 is operated, the HRU appliance will run for 30 minutes at ventilation level 3 (boost function) and then return to the previous ventilation position; the white LED placed next to button 4 will flash once as "button press" confirmation.



### Button 5 (👜)

When button 5 (minimum ventilation) is operated, the HRU appliance will be set to ventilation level 0 (holiday position); the white LED next to button 5 will blink once as "button press" confirmation.

(If applicable: CO<sub>2</sub>-sensor auto-mode & RH-sensor are disabled in this mode)



### Filter/ fault LED

This red LED indicates when filter(s) must be cleaned / replaced or when a malfunction has occurred in the connected HRU appliance.



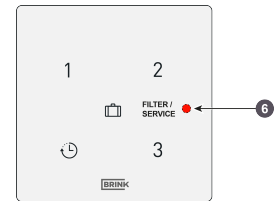
### Filter notification

The filter(s) in the HRU device connected to the Wireless 3-position switch must be cleaned or replaced when the red LED on the Wireless 3-position switch lights up.

For battery-powered Wireless 3-position switch: LED lights up for 300 seconds when any button is pressed (Wireless 3-position switch with battery power).

For mains-powered Wireless 3-position switch (optional): LED lights up continuously.

The filter notification cannot be reset via the Wireless 3-position switch. Refer to the manual of the HRU device connected to the Wireless 3-position switch for resetting the filter notification.



6 = LED Filter notification

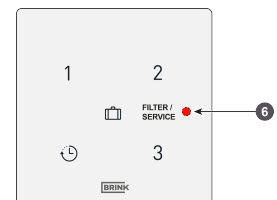
### Fault notification

If there is a fault in the HRU appliance that's connected to the Wireless 3-position switch, the red LED on the Wireless 3-position switch flashes with frequency of 1 Hz (1 blink per second).

For battery-powered Wireless 3-position switch: LED flashes for 300 seconds when any button is pressed (Wireless 3-position switch with battery power).

For mains-powered Wireless 3-position switch (optional): LED flashes continuously.

Check the installation instructions of the HRU appliance connected to the Wireless 3-position switch for troubleshooting for the error notifications indicated on the Wireless 3-position switch.



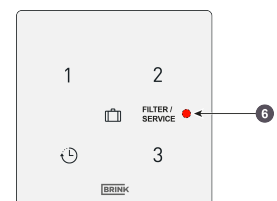
6 = LED fault indication (flashes 1Hz)

### Lost connection

When the Wireless 3-position switch loses connection with the Wireless transmitter/receiver, the fault LED will also flash.

The LED flashes 3 times 0.5 seconds ON and 60 seconds OFF or flashes for 300 seconds if any of the buttons are operated (Wireless 3-position switch with battery power supply).

Filter and fault notifications are overruled.



6 = LED (flash 0.5 sec on - 60 sec off )

# 3 Assembly

## 3.1 Installing Wireless 3-position switch

Follow **step 1** to **step 4** to install the Wireless 3-position switch. An example of a wireless 3-position switch is shown in this section, other remote controllers/sensors are installed in the same way.

### Step 1

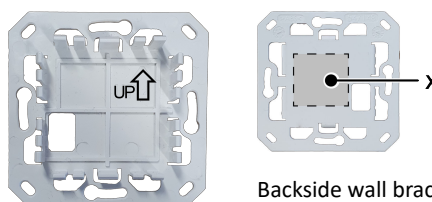
The wall bracket can be attached to a flush mounted electrical box (Ø 55 mm) or can be directly mounted on the wall with supplied double sided adhesive tape. Mounting on a electrical box is necessary when a permanent power supply (option) is used, see → [Connecting permanent power supply \(option\)](#) -> page 14. The Wireless 3-position switch should be placed at a height of approximately 1.65 meters above the floor.

- Screw or glue the wall bracket onto the wall in the correct position.



#### Note

The arrow on the wall bracket must point upwards!



Backside wall bracket with position double sided adhesive tape

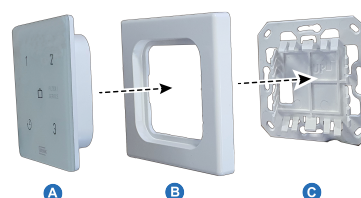
### Step 2

Remove the plastic isolation strip from the battery.



### Step 3

Click the Wireless 3-position switch (A) together with supplied frame (B) on the wall bracket (C).



After mounting the Wireless 3-position switch on the wall bracket, remove the foil from the front.



#### Step 4

When the Wireless 3-position switch has been installed on the wall, the Wireless transmitter/receiver\* can be placed in the USB port of the HRU appliance that needs to be connected with the Wireless 3-position switch. To connect the Wireless transmitter/receiver with HRU appliance see → [Connecting with the wireless transmitter/receiver \[Pairing\]](#) -> page 17 .



*\* The Wireless transmitter/receiver is not included in the scope of delivery of the Wireless 3-position switch and must be ordered separately!*



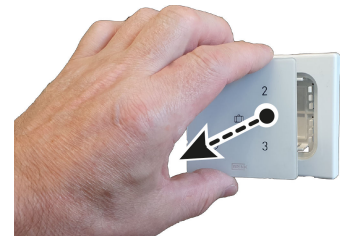
#### Note

Once the wireless remote controller/sensor receives power, all 5 LEDs on the controller/sensor will start flashing.

### 3.2 Remove Wireless 3-position switch

For removing the Wireless 3-position switch from the wall bracket: Grasp the front of the Wireless 3-position switch by the edges and gently pull it away from the bracket.

*An example of a wireless 3 position switch is shown in this section, but other wireless controllers/sensors are to be removed from the wall bracket in the same way.*



### 3.3 Connecting permanent power supply (option)

The optional permanent power supply can be ordered from Brink under article code 532924. When using the optional permanent power supply, the Wireless 3-position switch must be installed on a flush mounted electrical wall box (Ø 55 mm).

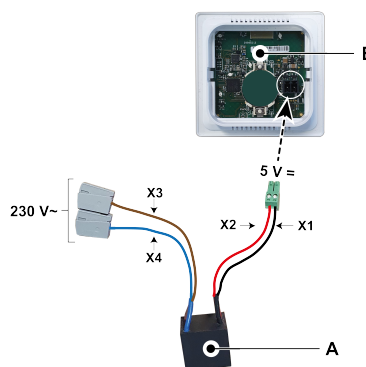


#### Danger

At all times disconnect the 230 V. mains supply when connecting a permanent power supply.

#### Step 1

- Place the permanent power supply (A) inside the wall box.
- Connect the 230V mains supply to the factory mounted gray connectors of the power supply. Strip the wire over a length of approx. 7 mm.



#### Step 2

- Feed the red and black wires with the green connector through the square hole in the in the wall bracket (C).
- Screw the wall bracket on the wall box.



#### Note

The arrow on the wall bracket must point upwards!

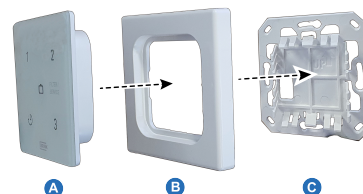
A. *Permanent power supply (230 VAC/5 VDC)*

B. *Wireless 3-position switch*

X1 = Black  
X2 = Red  
X3 = Brown  
X4 = Blue

#### Step 3

- Removal of the battery (if mounted) is not required but recommended.
- Feed the red and black wire with the green connector through the frame (B), and connect this to the connector on the back side of the Wireless 3-position switch (A).
- Click the Wireless 3-position switch (A) together with connected red and black wires and the frame (B) on the wall bracket (C).



#### Step 4

- After mounting the Wireless 3-position switch on the wall bracket, remove the foil from the front.
- Reconnect the 230 V mains supply.



#### Step 5

- When the Wireless 3-position switch has been installed on the wall, the Wireless transmitter/receiver\* can be placed in the USB port of the HRU appliance that needs to be connected with the Wireless 3-position switch. To connect the Wireless transmitter/receiver with HRU appliance see → [Connecting with the wireless transmitter/receiver \(Pairing\)](#) -> page 17



*\* The Wireless transmitter/receiver is not included in the scope of delivery of the Wireless 3-position switch and must be ordered separately!*

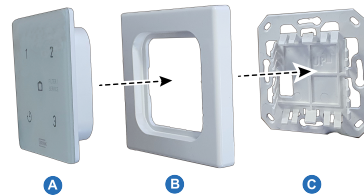


#### Note

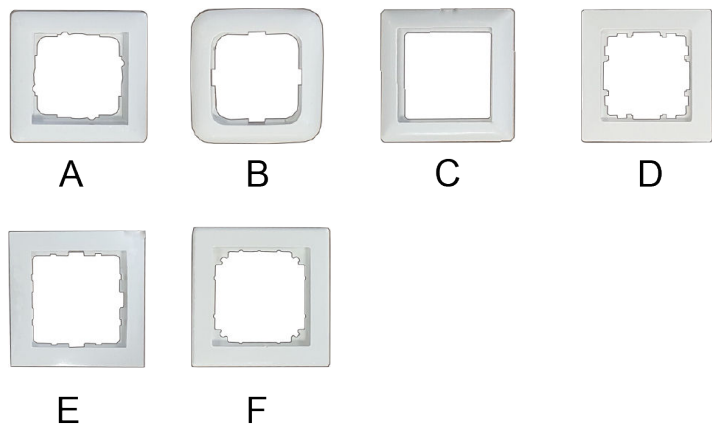
Once the wireless remote controller/sensor receives power, all 5 LEDs on the controller/sensor will start flashing.

### 3.4 Using another frame (option)

The Wireless 3-position switch consists of a wall bracket (C), a frame (B) and the wireless controller (A). The wall bracket (C) is designed in such a way that a large number of frames from other vendors can be used.



Products are supplied with Brink frame as standard. This frame can be replaced by frames from the other manufacturers and series. Appearance and tolerances vary by manufacturer. The following types of frames can be used instead of the standard frame:



- A. Gira - System 55
- B. Busch Jaeger Balance/Reflex SI
- C. Jung AS
- D. Siemens Delta
- E. Berker S.1
- F. Merten System M


*The above mentioned alternative frames are not included in the Brink delivery program!*

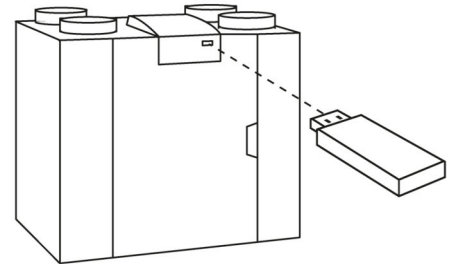


# 4 Setting to work

## 4.1 Connecting with the wireless transmitter/receiver (Pairing)

When the Wireless 3-position switch is installed and the Wireless transmitter/receiver is placed in the HRU appliance (see image on the right), the two can be connected (pairing).

For a HRU appliance equipped with a display, the USB symbol (  ) is visible as confirmation that the Wireless transmitter/receiver has been "recognised"; for a HRU appliance without a display, this USB symbol will be visible in the app. If the USB symbol is not visible, your HRU appliance is probably equipped with a software version before July 2022 and it is not possible to connect the Wireless 3-position switch.



Follow the steps as described below.

**Note:** For a battery-powered Wireless 3-position switch, the LEDs turn off automatically after 300 seconds to save battery power. After touching any button, the LEDs turn on again.

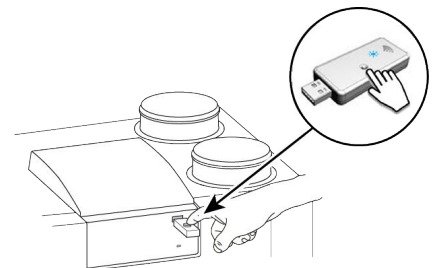
### Step 1

Apply mains power to the HRU appliance.

### Step 2

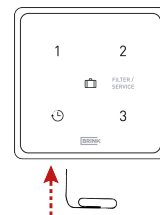
Press and hold the pairing button of the Wireless transmitter/receiver between 3 and 10 seconds.

The green LED on the Wireless transmitter/receiver starts flashing (1x per second). The pairing mode is active for 10 minutes.

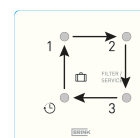


### Step 3

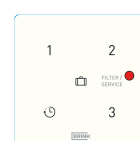
Press and hold the pairing button between 3 seconds 10 seconds on the bottom of the controller (through a small hole), for example with the end of a paper clip. When pressing the button a "click" should be noticeable.




Pairing mode is enabled when four Led lights illuminate in turn (0.5 sec ON, the next one comes on when the previous one is off).



Pairing mode is disabled when the red LED is ON for two seconds. If pairing fails, reset the Wireless 3-position switch to factory setting and try to pair Wireless 3-position switch again. Or see → [Signal amplifier](#) -> page 22



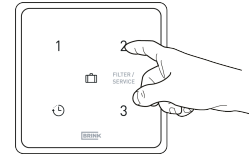
#### Step 4

Choose under which number the sensor should be registered by configuring a "NODE ID"; press any of the four buttons on the Wireless 3-position switch (do not use the holiday button ). For example press button 2; LED 2 will flash once.

When pairing multiple remote controllers/sensors with the HRU device, press a button for NODE ID that has not been paired yet. This ID must be unique for each sensor. The button number corresponds to the number of the paired accessory in the HRU device menu.

If pairing is unsuccessful, return to step 3. Also, check the wireless transmitter/receiver.

To stop the pairing mode: Briefly press and hold the pairing button of the wireless transmitter/receiver (1 second). The green LED on the wireless transmitter/receiver will stop flashing.



---

#### Note

Always deactivate the pairing mode on the wireless transmitter/receiver immediately after pairing.

---

#### Note

If a wireless remote controller/sensor is registered with an existing NODE ID, the first registered remote controller/sensor will be overwritten. Please ensure that all paired remote controllers/sensors have their own unique NODE ID.

---

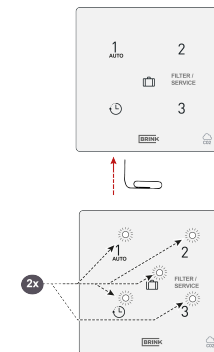
The activation of the remote controller/sensor and the airflow rates associated with the ventilation settings must always be set on the paired HRU device. This cannot be done on the Wireless 3-position switch. Refer to the installation manual of the connected HRU device for further instructions.

## 4.2 Factory reset Wireless 3-position switch

It is possible to reset the wireless transmitter/receiver and remote controller(s)/sensor(s) back to factory settings:

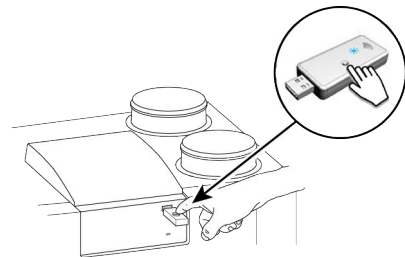
### Factory resetting Wireless 3-position switch

- Press and hold the pairing button (for example with end of a paperclip) for more than 20 seconds. When pressing the button a "click" should be noticeable.
- To confirm the reset all 5 LED's will flash two times (0,5 second on and 5 seconds off).
- All the pairing information has been deleted from the Wireless 3-position switch.



### Factory resetting Wireless transmitter/receiver

- Press and hold the button on the Wireless transmitter/receiver for more than 20 seconds.
- To confirm the reset, the green LED on the Wireless transmitter/receiver will flash two times.
- All the pairing information has been deleted from the Wireless transmitter/receiver.



## 4.3 Pairing multiple systems

When pairing multiple installations/residences, be sure to complete the pairing of the wireless transmitters per installation/residence, and ensure that only one (1) wireless transmitter/receiver is in pairing mode at a time. It is possible for a Wireless transmitter/receiver in pairing mode to detect and pair with wireless transmitter/receiver(s), wireless controller(s), and/or sensor(s) from different installations/residences.

To stop the pairing mode on a Wireless transmitter/receiver: Press the pairing button on the wireless transmitter/receiver (1 second). The Green LED on the device will stop flashing.

---

### **i** Note

Always deactivate the pairing mode on the wireless transmitter/receiver immediately after pairing.

---

# 5 Information additional Wireless 3-position switch

## 5.1 Pairing additional remote controller/sensor

For connecting extra remote controllers or sensors to the HRU appliance follow the steps as described below.

*A wireless 3-position switch is shown as an example.*

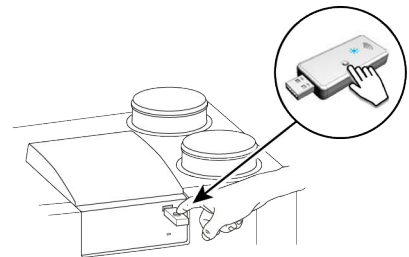
### Step 1

Apply mains power to the HRU appliance.

### Step 2

Press and hold the pairing button on the Wireless transmitter/receiver (between 3 and 10 seconds).

The green LED on the Wireless transmitter/receiver starts flashing (1x per second). The pairing mode is active for 10 minutes.

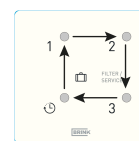


### Step 3

Press and hold the pairing button between 3 seconds 10 seconds on the bottom of the controller (through a small hole), for example with the end of a paper clip. When pressing the button a "click" should be noticeable.



Pairing is enabled when four Led lights illuminate in turn (0.5 sec ON, the next one comes on when the previous one is off).

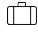


Pairing disabled when the red LED is ON for two seconds.

If pairing fails, reset Wireless 3-position switch to factory setting and try to pair Wireless 3-position switch again. Or see → [Signal amplifier](#) -> page 22



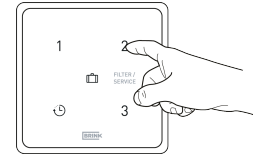
#### Step 4

Choose under which number the sensor should be registered by configuring a "NODE ID"; press any of the four buttons on the Wireless 3-position switch (do not use the holiday button ). For example press button 2; LED 2 will flash once.

When pairing multiple sensors/remote controllers with the HRU device, press a button for NODE ID that has not been paired yet. This ID must be unique for each sensor. The button number corresponds to the number of the paired accessory in the HRU device menu.

If pairing is unsuccessful, return to step 3. Also, check the wireless transmitter/receiver.

To stop the pairing mode: Briefly press and hold the pairing button of the wireless transmitter/receiver (1 second). The green LED on the wireless transmitter/receiver will stop flashing.



---

#### Note

Always deactivate the pairing mode on the wireless transmitter/receiver immediately after pairing.

---

#### Note

If a wireless remote controller/sensor is registered with an existing NODE ID, the first registered remote controller/sensor will be overwritten. Please ensure that all paired remote controllers/sensors have their own unique NODE ID.

---

# 6 Signal amplifier

An optional signal amplifier is available. This amplifier is necessary when the signal needs to cover a long distance in the house, in very well-insulated homes, or in situations where signal-disrupting materials are used.

If a sensor/remote controller is out of range of the wireless transmitter/receiver and cannot be paired (red LED on controller or sensor); remove the wireless transmitter/receiver from the Brink device and connect it to a smartphone adapter or laptop (to provide power to the wireless transmitter/receiver). Now locate the wireless transmitter/receiver in the same room as the controller or sensor to be paired.

Restart the pairing procedure. If pairing is successful, a signal amplifier needs to be installed to extend the signal range of the wireless transmitter/receiver to the location of the controllers and/or sensors.

The signal amplifier can be ordered at Brink under article code 532715.

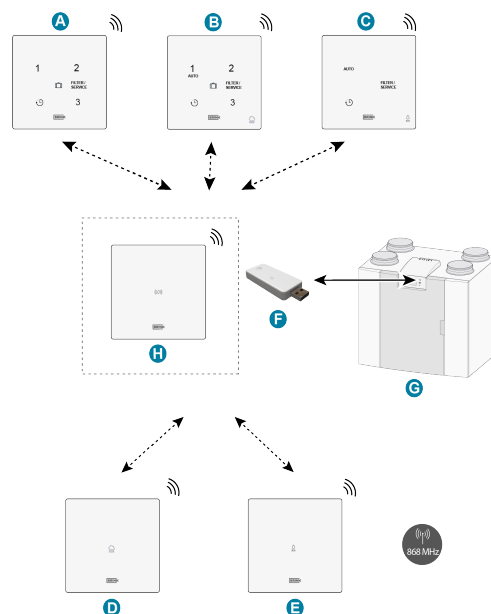
---

**Note**  
The signal amplifier requires a fixed 230 V power supply.

---

**Note**  
Always pair remote controllers and sensors directly to the wireless transmitter/receiver and not through the signal amplifier. The signal amplifier cannot be used for pairing.

---



- A. Wireless 3-position switch
- B. Wireless CO<sub>2</sub> sensor with 3-position switch
- C. Wireless RH sensor with boost function
- D. Wireless CO<sub>2</sub> sensor
- E. Wireless RH sensor
- F. Wireless transmitter/receiver
- G. Device with USB connection (e.g., HRU device type Flair)
- H. (Optional) Signal amplifier

# 7 Troubleshooting and warranty

## 7.1 Failure

- When using battery-powered remote controllers/sensors, the HRU device will go into a fault state when the battery is low. The fault will disappear automatically after replacing the battery.
- Check if the HRU device is in vacation mode if wireless CO<sub>2</sub> or RH sensors are not functioning.
- If there are issues with pairing, see → [Signal amplifier](#) -> page 22
- Refer to the installation manual of the connected HRU device for other errors.

## 7.2 Warranty

"The Wireless 3-position switch has been carefully manufactured by Brink Climate Systems B.V. and meets high-quality standards. The functionality of the Wireless 3-position switch is guaranteed for a period of two years from the moment of delivery. This warranty is provided in accordance with Brink Climate Systems B.V.'s General Terms and Conditions, which you can find on [www.brinkclimatesystems.nl](http://www.brinkclimatesystems.nl). In case of incorrect or improper use of the Wireless 3-position switch and failure to follow the instructions in this user manual, your right to warranty is void.

If you wish to claim warranty:

You must make this known in writing via:

Brink Climate Systems B.V.

P.O. Box 11

NL-7950 AA, Staphorst, The Netherlands

---

### **Note**

It is not allowed to make any changes to the hardware or software of the Wireless 3-position switch. This can affect the proper functioning of the Wireless 3-position switch, and in that case, all warranties will be void."

---

# 8 Maintenance

## 8.1 Maintenance

Clean the Wireless 3-position switch regularly with a soft cloth.

**i Note**

Never apply water and/or (cleaning) liquid to the Wireless 3-position switch.

## 8.2 Replace battery

(Not applicable when using the optional permanent power supply.)

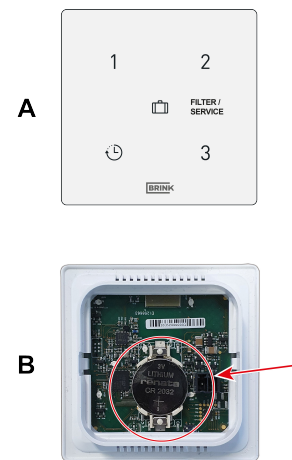
Replace battery with correct type CR2032.MRF battery manufacturer Renata (or Panasonic CR-2032/BS ).

Pay attention to the position of the battery! The text marked "+" must always be legible after inserting the battery.

For replacing battery take Wireless 3-position switch from the wall bracket, see → [Remove Wireless 3-position switch](#) -> page 13.

**i Note**

Replace the battery at least once every 2 years to prevent malfunctions.



A. Front side Wireless 3-position switch

B. Back side Wireless 3-position switch



# 9 Declaration of Conformity

This declaration of conformity is issued under the sole responsibility of the manufacturer.

**Manufacturer:** Brink Climate Systems B.V.  
**Address:** P.O. Box 11  
NL-7950 AA, Staphorst, The Netherlands  
**Product:** Wireless 3-position switch

The product described above complies with the following directives:

◆ 2014/53/EU (EMC directive)

The product described above has been tested according to the following standards:

◆ EN 301 489-3: V2.1.1:2019-03  
◆ EN 300 220-2: V3.2.1:2018-06  
◆ ETSI EN 300 220-1: V3.1.1 (2017-02)  
◆ EN 62479: 2010  
◆ EN 60669-2-5: 2016  
◆ EN 60669-2-1: 2004 + A1:2009  
◆ EN 50428: 2005 + A1:2007 + A2:2009

EU-Type Examination Certificate 40056587; VDE Testing and Certification Institute (0366).

Staphorst, 15-04-2023



A. Hans  
*Managing Director*

# 10 Recycling and disposal



Do not dispose of as household waste!

In accordance with the Waste Disposal Act, the following components must be disposed of or recycled in an environmentally compatible manner by means of appropriate collection points:

- Old appliance
- Wearing parts
- Defective components
- Electrical or electronic waste
- Environmentally hazardous liquids and oils

Environmentally compatible means separated by material groups to ensure the greatest possible recyclability of the basic materials with the minimum environmental impact.

1. Dispose of packaging made of cardboard, recyclable plastics and synthetic filler materials in an environmentally compatible manner through appropriate recycling systems or a recycling centre.
2. Please observe the applicable national and local regulations.





*Air for life*

**Brink Climate Systems B.V.**

Wethouder Wassebaliestraat 8, NL-7951SN Staphorst

T: +31 (0) 522 46 99 44

E. [info@brinkclimatesystems.nl](mailto:info@brinkclimatesystems.nl)

[www.brinkclimatesystems.nl](http://www.brinkclimatesystems.nl)